

A **SUSHMA** Initiative

joynest
MOH-1

new generation. new-age lifestyle.

the address of success

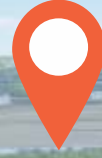
You are a game changer. You don't follow. You lead. You don't wait for things to happen. You make things happen. That's why you deserve a no-compromise home. Joynest MOH. 1 is just that kind of home. A home that lets you excel in life. A home that celebrates your success

- 2/3 BHK Mid-rise Apartments
- Private Garden Homes on Ground Floor
- Private Terrace Homes on Top Floor

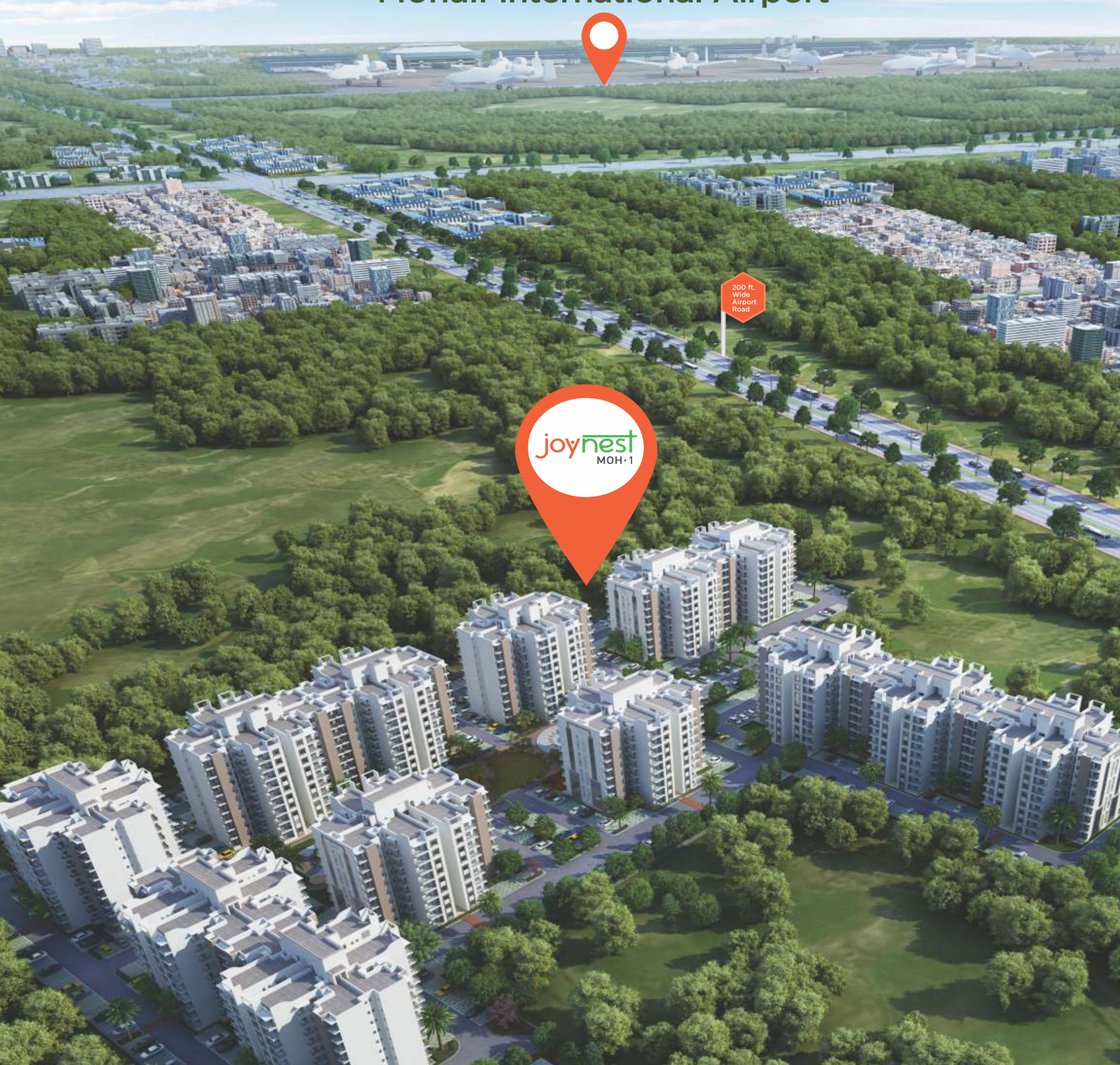




Mohali International Airport



200 ft.
Wide
Airport
Road





stay close. go places.

You know where you going. And it's always nice to get there faster. That's why we have chosen the 200 feet wide Airport Ring Road to build Joynest MOH.1. Easily accessible from everywhere, it's close to airport yet away from the hustle and bustle of the city.

- Located on the 200 Feet Wide Airport Ring Road PR-7
- Close to Mohali International Airport
- Extremely Well Connected to Mohali, Chandigarh, Panchkula, Zirakpur

your space. your way.

Joyneest MOH.1 is a marvel of planning. Extremely modern, there's optimal use of space and complete privacy. Each apartment is designed for natural light and cross ventilation. Sitting areas for elderly ensure they get to catch up with neighbours and friends. Dedicated parking spaces allow you to come and go at your time.

- Basement Parking • Elderly Sitting
- Landscaped Area









stay healthy. stay happy.

Today's lifestyle demands you to stay healthy and fit. That's why Joynest MOH.1 boasts of a plethora of fitness and sports facilities like - fully-equipped gymnasium, walking track, basketball court, skating rink and more. Stay here. Stay fit.

- Gymnasium • Open Fitness Court • Walking Tracks
- Meditation & Yoga Pavilion • Basketball Court
- Skating Rink • Amphitheatre



new friends. new bonds.

Life is about celebrating every moment. Joynest MOH.1 ensures just that. Hit the club. Or gather people to enjoy a game of billiards.

Plan a house party anytime. Because with multiple retail outlets in the complex, you can be ready in minutes.

Live without worries. Live easy.

- Modern Club House • Party Lawn • Kids Play Area & Tot Lots
- Billiards Room • Retail Area • Departmental Stores
- Swimming Pool







where style meets space

We put our best in every room of every home. You'll see that when you book a Joynest home. Each corner has been aesthetically designed to give you maximum space without compromising on great looks. It's modern. It's young. It's you.

- Designed by Top Architects • Natural Light and Ventilation
- Rectangular Spaces for Better Space Efficiency
- Special Emphasis to Maintain Privacy of Bedrooms



where class matches comfort

If first impressions matter, the living room is going to create a great one. It exudes class and takes lifestyle to a whole new level. It's the same with the kitchen. Designed keeping in mind the need of home makers, it's extremely well-planned and safe.

- Stylish Living Rooms • Well Planned Kitchens
- Dedicated Loft Area for Additional Storage





tested for quality over and over

Before building-material becomes a part of any SUSHMA project, they have been through 65000 quality tests. It's our way of ensuring that they are strong enough to withstand the harshest of conditions. What's more, a highly qualified team ensures 100% customer satisfaction. Expect the same level of quality and professionalism in all Joynest projects.

- Over 65000 Tests • Built to Withstand any Condition
- Finishings and Fittings from Top Brands



SUSHMA delivered projects.

SUSHMA Elite Cross

3 BHK Apartments and Penthouse

Gazipur - Zirakpur

No. of units: 352 apartments



SUSHMA Urban View

3 BHK Apartments and Penthouse

Gazipur - Zirakpur

No. of units: 160 apartments



SUSHMA Green vista

2 BHK Apartments

Gazipur - Zirakpur

No. of units: 194 apartments



SUSHMA Villas 1 & 2

Independence Duplex Villas

Patiala Highway - Ziakpur

No. of units: 40 duplex villas



SUSHMA Atrium

Business Spaces

Mohali

Total Area: 32,400 sq. ft.



SUSHMA Urban Plaza

Retail Showrooms

gazipur - Zirakpur

Multiple built-up SCOs



SUSHMA ongoing projects.

SUSHMA Chandigarh Grande

3/4 BHK Apartments

CHD - Delhi NH-22, Zirakpur

No. of units : 608 apartments



SUSHMA Crescent

2/3 BHK Apartments and Penthouse

Gazipur - Zirakpur

No. of units : 696 apartments



SUSHMA Grande Nxt

3 BHK Apartments

CHD - Delhi NH-22, Zirakpur

No. of units : 247 apartments



SUSHMA Infinium

Business Space, Deck Offices, Retail

CHD - Delhi NH-22, Zirakpur

Total Area: 7,25,000 sq. ft.



SUSHMA Atelier

Convertible Studios, SCO Floor

CHD - Delhi NH-22, Zirakpur

Total Area: 7,25,000 sq. ft.



SUSHMA Homework

Boutique Serviced Studios

CHD - Delhi NH-22, Zirakpur

Total Area: 1,10,000 sq. ft.



joynest ongoing projects.

Joynest MOH.1

2/3 BHK Apartments

PR-7, Airport Road, Near Aero City, Mohali

No. of units : 1066 apartments



Joynest ZRK.1

3 BHK Apartments

Gazipur - Zirakpur

No. of units : 194 apartments



ongoing projects.

Elementa Kasauli

Studio, 1 BHK, 2 BHK + Study Apartments

Kasauli, Himachal Pradesh

No. of units : 399 apartments





joy



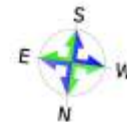
A **SUSHMA** Initiative

joynest
MOH-1

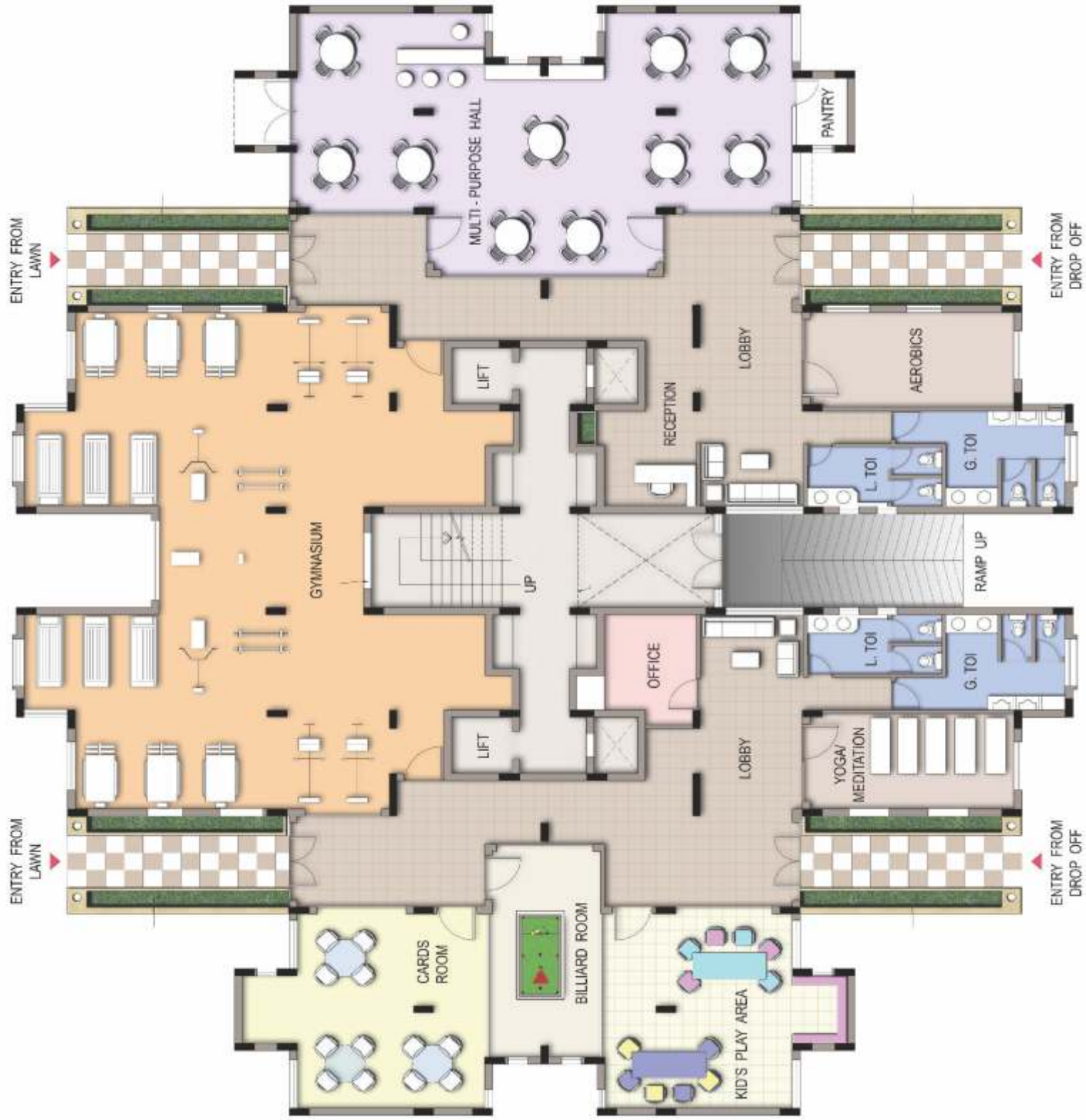
joynest
MOH-1 MASTER PLAN

LEGEND :

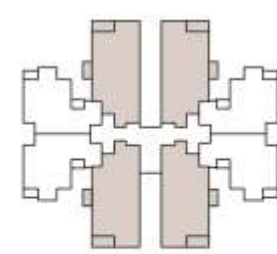
1. ENTRANCE PLAZA
2. DROP OFF
3. SHOPPING ARCADE
4. CLUB
- GYM
- MULTI-PURPOSE HALL
- YOGA / MEDITATION ROOM
- KIDS PLAY AREA
- CARDS ROOM
- BILLIARD ROOM
5. JOGGING / WALKING TRACK
6. GYMNAST CORNER
7. SAND PIT
8. BASKET COURT
9. KID'S PLAY AREA
10. SKATING RING
11. TOT LOTS
12. SWIMMING POOL
13. ELDERLY SIT - OUTS
14. AMPHITHEATRE
15. YOGA SQUARE
16. CRICKET NET



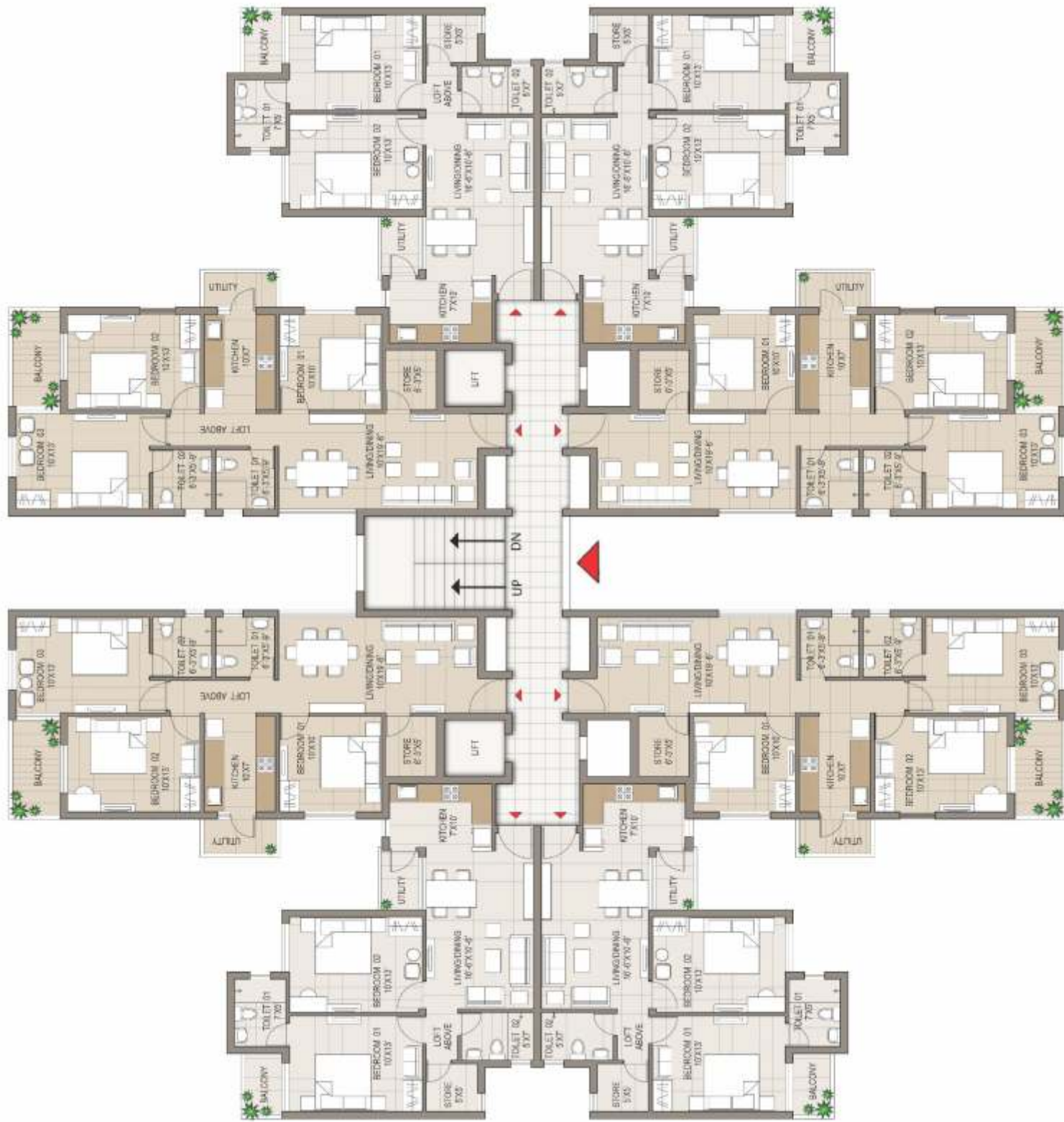
joynest CLUB PLAN
MOH-1



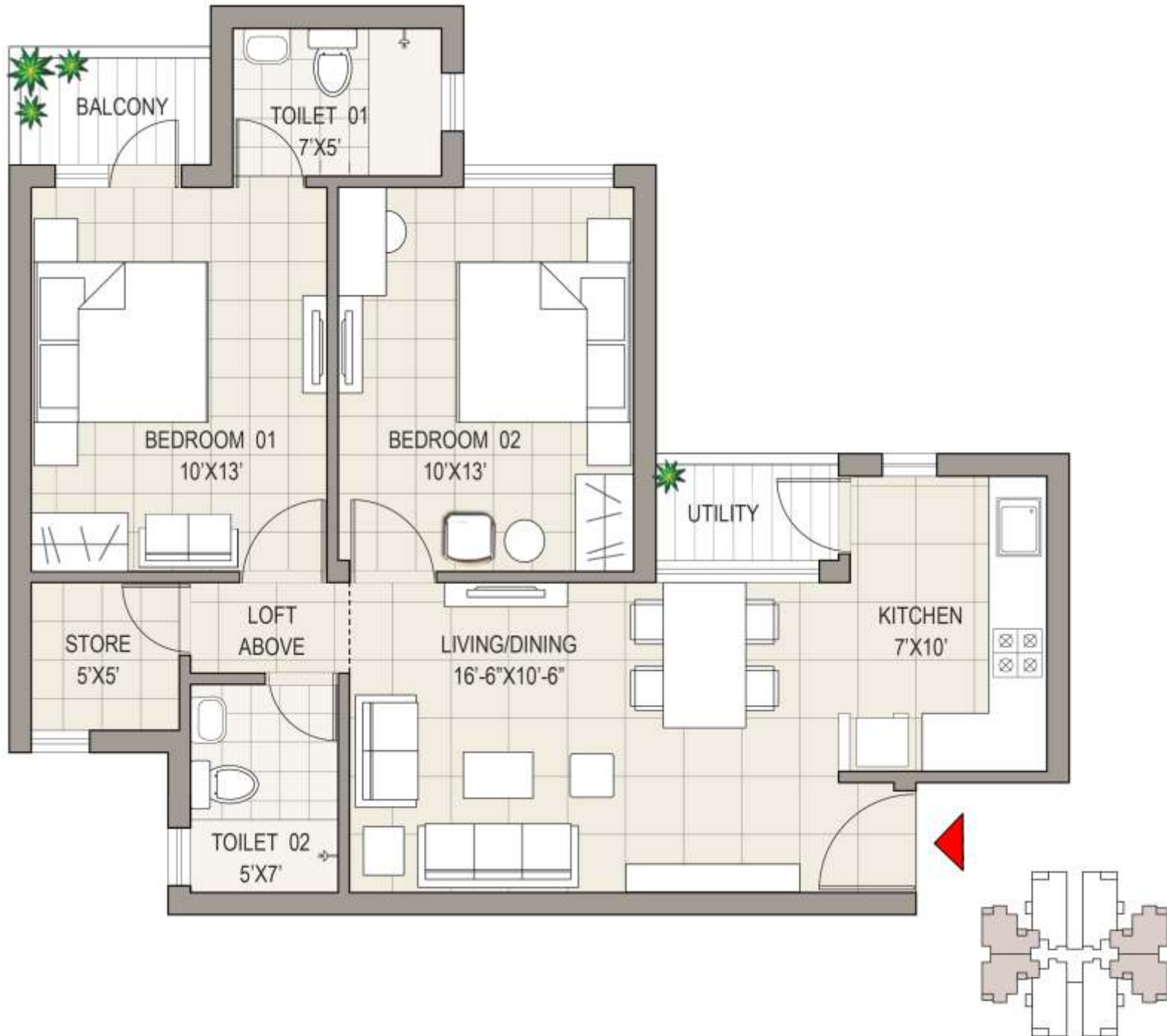
joynest MOH-1 3BHK UNIT PLAN
1355 Sq. Ft.



KEY PLAN



joynest MOH-1 2BHK UNIT PLAN
1080 Sq. Ft.



joy^{nest} SPECIFICATIONS
MOH-1

Item	Living/Dining Room	Master Bedroom	Other Room(s)	Toilets	Kitchen
Flooring	Vitrified Tiles	Imported Wooden Flooring	Vitrified/ Ceramic Tiles	Anti Skid Ceramic Tiles	Anti Skid Ceramic Tiles
Walls	Oil Bound Distemper	Oil Bound Distemper	Oil Bound Distemper	Designer Ceramic Tiles	Designer Ceramic Tiles
Windows/ External Doors Aluminum	Powder Coated Engineered Aluminum	Powder Coated Engineered Aluminum	Powder Coated Engineered Aluminum	Powder Coated Engineered Aluminum	Powder Coated Engineered Aluminum
Internal Door	Wooden-Skin Door	Wooden-Skin Door	Wooden-Skin Door	Wooden-Skin Door	-
Door Hardware	Secure Mortise Lock	Secure Mortise Lock	Secure Mortise Lock	Secure Mortise Lock	-
Switches	Modular	Modular	Modular	Modular	Modular

STANDARD FEATURES

Double Bowl SS Sink and Granite Counter Top
 Power Backup to run ACs all the time
 Weatherproof Emulsion / Texture Paint on Exterior Walls
 MS Railing in Balcony and Staircase
 Branded Sanitary Fixtures in Toilets.
 Intercom Facility
 Paved Hardscape

joynest LOCATION MAP
MOH-1



Map not to scale.

With global exposure, our tastes have evolved.
We are seeing the best and hence have begun to
aspire for them as well. We also want the best value
for our money. Joynest, an initiative by the Sushma Group,
intends to fulfill this new need. It provides families the
lifestyle they wish for. That too within their budget.

Launched across Punjab, every Joynest home
optimizes the use of space, offers comfort, convenience,
security and a modern lifestyle.



Visit Us.: joynestmohali.com
Call Now.: 9915144888